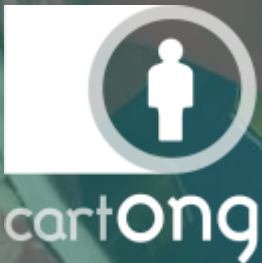


# 2022 Annual Report



Leverage **d**to  
Empower **org**anizations  
Enable **ch**ange

# PRESIDENT'S MESSAGE

2022 was a busy year for CartONG, not only in terms of supporting our humanitarian and development partners in their operations, but also in the development and structuring of our organization. The beginning of the year was marked by the invasion of Ukraine. Our specialists were immediately mobilized to provide support to MSF GIS Centre and two of them were deployed in the field for long-term GIS missions. In addition, we supported Terre des hommes' regional response through the development of a global information management and mobile data collection system. As part of this support, two staff members were deployed to Romania, Hungary and Moldova to analyze the needs and train the teams on data collection tools.

Beyond the war in Ukraine, the possibility to resume field missions after the limitations due to the COVID-19 pandemic, allowed us to continue and improve the effectiveness of the support provided to our partners. A 3-week deployment to Pakistan in support of UNHCR's first Health Access and Utilization Survey, for example, helped provide information on how Afghan refugees access health care services in the country and allocate resources where they are most needed in a way that would not have been possible from remote. In parallel to the field missions, we continued our personalized information management support to a wide range of aid actors – such as Acting for Life, Expertise France, FairTrade International, Secours Islamique France, Sidaction, UNICEF, and VENRO.

In support of the sector, CartONG also continued the implementation of its own initiatives. 2022 was marked by the end of the first three-year phase of the project “Strengthening data practices within francophone CSOs”, financed by the AFD, which has seen the launch of the Learning Corner (learn more [page 19](#)) and which also allowed CartONG to have its first external project evaluation. This evaluation highlighted the relevance, coherence and overall quality of the project while showing the need for a second phase for the beneficiaries to reinforce the knowledge due to the high amount of resources shared. If some projects ended, many more started, including [MapInclusive](#), which aims at supporting the social inclusion of migrants in Europe through digital mapping with the support of the European Union, and a two-year initiative financed by the French Ministry of Europe and Foreign Affairs to [advance responsible data practices](#) within the aid sector. Finally, CartONG organized the 8th edition of the GeOnG forum in the fall; an opportunity to gather our partners and counterparts to exchange, share good practices and learn collectively (learn more [page 6](#)).

Internally, in 2022 we focused on restructuring our management and governance processes. A long-term, participatory endeavor resulted in a new governance model – based on collective intelligence – which was adopted in November (learn more [page 7](#)) and which has already started to be put in place throughout 2023 (especially with the recruitment of a new Executive Director at the moment of writing this report). In addition, 2022 was also the opportunity to return to face-to-face associative gatherings, with our first in-person staff & volunteer Get-Together in more than two years.

2023 will be without doubt as enriching as 2022 and CartONG will continue to work to strengthen its approach and the relevance of the support to the sector and its partners.

Edmond Wach, [President](#)

Lisa Daoud, [Vice-president](#)

## TABLE OF CONTENT

<b>PRESIDENT'S MESSAGE</b>	<a href="#">Page 1</a>
<b>ABOUT CARTONG</b>	<a href="#">Page 2</a>
<b>IN SHORT</b>	<a href="#">Page 3</a>
Key moments	<a href="#">Page 4</a>
2022 in numbers	<a href="#">Page 5</a>
A few highlights	<a href="#">Page 6</a>
<b>PANORAMA OF 2021</b>	<a href="#">Page 8</a>
Overview per activity	<a href="#">Page 9</a>
GIS at CartONG	<a href="#">Page 15</a>
IM & MDC at CartONG	<a href="#">Page 16</a>
Participatory mapping at CartONG	<a href="#">Page 17</a>
Web development at CartONG	<a href="#">Page 18</a>
Resource Center	<a href="#">Page 19</a>
Volunteers' Corner	<a href="#">Page 21</a>
<b>FINANCIAL REPORT</b>	<a href="#">Page 24</a>
<i>Acronyms</i>	<a href="#">Page 26</a>
<i>Acknowledgements</i>	<a href="#">Page 26</a>

# ABOUT CARTONG

## A few words about us

Created in 2006, CartONG is a French H2H NGO specialized in Information Management.

Our goal is to put data at the service of humanitarian, development and social action projects.

We are dedicated to improving the quality and accountability of field activities, in particular through better needs assessments and monitoring and evaluation.

We act as a multidisciplinary resources and expertise center, accompanying our partners' strategies and operations.

Our staff and volunteers also support the community as a whole by producing documentation, building capacities and raising awareness on the technical, strategic and ethical challenges of digital technologies.

## Our values

### HUMAN-CENTRIC

We put the dignity of individuals and populations at the heart of our choices and actions, respecting their rights and the principles of economic, ecological and social justice.

### PROFESSIONALISM

"Going the extra mile", we aim for the highest technical quality yet seek pragmatic solutions.

### AGILITY

An integral part of our DNA, our team is continually looking for ways of innovating and adapting itself to each context and request.

### AUTONOMY

Thanks to CartONG's unique organizational structure and continuous transfer of skills, our approach is designed to empower its own members as well as our partners. Our greatest achievement is your autonomy.

### CONNECTEDNESS

CartONG is a community nurturing mutual support, new relationships and individual fulfillment. We look out for one another, valuing our cultural diversity.

### COLLABORATION

At all stages of our projects, in the spirit of transparency and sharing, we aim to involve each and every stakeholder.

To learn more about our organization, visit our website at: [www.cartong.org](http://www.cartong.org)



Mapping & Geographic Information Systems



Mobile Data Collection



Data processing



Transversal Information Management approaches

## Our networks

CartONG has endorsed the Principles for Digital Development in 2019 and is a member of the H2H Network as well as Coordination Sud (via the CHD) - the national coordination of French humanitarian and development NGOs.



## Our board

**Edmond Wach**, President

**Lisa Daoud**, Vice-President

**Nicolas Grosjean**, Secretary

**Patrick Fuchs**, Treasurer

**Jean-Paul Nicoletti**, Conciliator

**Florent Bédécarrats**, Member of the Board

**Maud Hazan**, Member of the Board

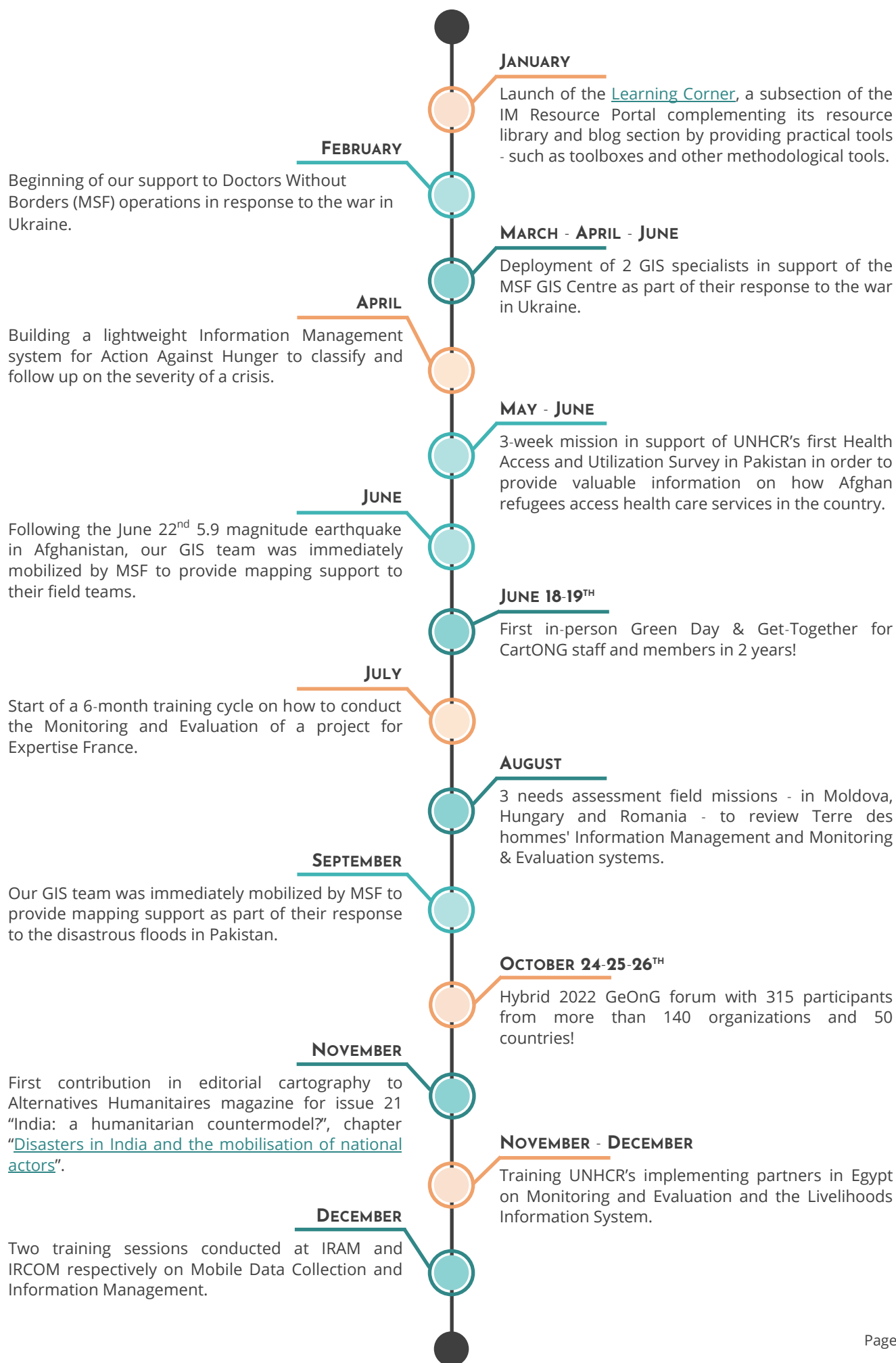
**François-Xavier Dosogne**, Member of the Board

**Laurène Barlet**, Guest volunteer at the Board

01

IN SHORT

# KEY MOMENTS



# 2022 IN FIGURES



**80+ PARTNERS**  
supported over the year

**41 STAFF** including  
civic service volunteers  
and interns



**64 PROJECTS**  
completed and/or started during  
the year

**960+ PEOPLE**  
trained over the  
year



**700+ MAPS**  
produced this year



# A FEW HIGHLIGHTS

## A RENEWED GEONG FORUM!

2022 was marked by the return of the [GeOnG forum](#), an opportunity for CartONG and the whole sector to reflect on its practices and share its experiences. The 8th edition of the forum was held for the first time ever in a hybrid format from October 24th to 26th, 2022. Participants were able to enjoy the full experience by attending the event at the local Congress Center in Chambéry. For the participants who could not make the trip to France for the event, there was also a lighter online offer. Get a glimpse of the event by [watching the after-movie](#).



During the 3 days of the conference and through the 46 sessions on the agenda, we invited participants to look into two aspects: how aid practitioners can play an active role in being part of the solution and how they can embrace technologies and approaches that uphold the “do no environmental harm” motto.



For this edition, we aimed to open the discussion on a highly topical and particularly challenging theme: *“Do no harm” in the era of environmental emergency: revisiting Information Management in the aid sector*. Indeed, as the world is struggling with an unprecedented global crisis – with environmental, sanitary, social, political and humanitarian dimensions – it seemed appropriate to look at our practices and examine the extent to which the data solutions we develop in the aid sector can help us better understand and respond to the various crises we face, but also whether they can be said to worsen these crises. In particular, when following the “do no harm” principle that is at the heart of our actions, it seemed crucial to assess more the environmental side effects of what the digitalization of our work often implies, and not only look at the outcomes of our short-term programming.



One of the main findings of this edition was that we still have much to learn on reducing the environmental impact of our tools and systems, and that we need to ensure we don't only focus on IT for Green but that we also follow the principles of Green IT. The question of ownership and collaboration concerning data was also looked into through a couple of sessions, with reflections and practices that clearly showed that many actors are becoming more proactive than they used to be, with discussions around the associated power shifts amongst actors of the sector that is needed and the recurring topic of sustainable long-term approaches versus project timelines. Check out all the learnings from the GeOnG forum in [this short blog post](#).

The 8th edition gathered 315 participants from more than 140 organizations and 50 countries! We welcomed representatives from NGOs, IOs, and also from the academic and research sector. This edition was marked by a sharp increase in attendance from support organizations, demonstrating that the questions and reflections are shared by the sector as a whole and that the entire international cooperation chain is coming together to imagine the best possible solutions to address the problems we are facing. Having this edition in a hybrid format with a large part of the sessions filmed or even streamed live - and some of them taking place fully online - allowed us not only to bring the forum to an audience that might not necessarily be able to travel to Chambéry to attend, but also to capitalize on these discussions by making a lot of the sessions available on [our YouTube channel](#).



## A NEW GOVERNANCE BASED ON COLLECTIVE INTELLIGENCE

In addition to a number of significant projects both for the sector and as part of our support to our partners (see next section), 2022 also marked a turning point for CartONG with the development of a new governance and management model.

As we were preparing our strategy for the 2022-2024 period in 2021, it became clear that our governance and management model were no longer adequate to meet the challenges our organization was facing. The restructuring of the governance model was seen as a necessity and was therefore included as an objective in the strategy (area 4). We obtained the support of Coordination Sud's Institutional and Organizational Strengthening Fund (FRIO), which allowed us to fund an external consultancy in 2022 and to structure our approach. This consultancy was carried out over nearly the course of the entire year of 2022 by Anne-Laure Prévost and Olivier Piazza of Les Maisons de l'Intelligence Collective cooperative. With the support of these two consultants, the process of redefining our governance model began with an in-depth assessment of the functioning of our organization in the spring 2022. This detailed diagnosis allowed us to highlight the existing challenges, contradictions and opportunities for CartONG.

The process then accelerated in June during a day-long team meeting where all CartONG staff and some board members gathered to discuss the different scenarios the team of consultants proposed based on the diagnosis run during the spring.

It was also an opportunity to experiment with some of the proposed methods - such as the "election without candidates" - to help us picture a potential implementation at CartONG.



Based on the collective preferences that emerged during this exchange day, a working group refined a final scenario, which was approved during a two-step process: firstly, in early October by the board and CartONG Management Team, then, in early November by the entire CartONG team. At the same time, in order to move forward and not to lose momentum, we started addressing some of the issues that were identified during the original diagnosis in regards to regulating internal tensions and improving internal communication and transparency, and we started experimenting on new methods of democracy within the organization.



The new chosen model aims to stay true to both the values of our organization and the desire for democracy and the use of collective intelligence expressed by the team, but it is also a commitment to being pragmatic to ensure we can provide efficient and qualitative work in support of our partners and the aid sector. It thus legitimizes existing strategic decision-making bodies, clarifies decision-making processes and reconfigures the internal flow of information. We have tried to remain true to the DNA of CartONG, an innovative and agile organization, which is committed to continuous progress while staying attentive to the people who constitute it and its core value of "connectedness". You can find more information about our new governance model and the overall process we followed [in this article](#).



09

PANORAMA OF 2022

# OVERVIEW PER ACTIVITY\*



\*We present here only a selection of CartONG's activities in 2022.



## FIELD OPERATIONS

CartONG's support to field operations often takes the form of direct production or configuration of maps, databases, dashboards, webmaps or other Information Management tools or products. Beyond this, we often support our partners through the piloting or implementation of tools, or through hotline-type support on related technical, methodological or ethical questions. These activities are done in-person or remotely depending on the context, existing constraints and the needs of the partner.

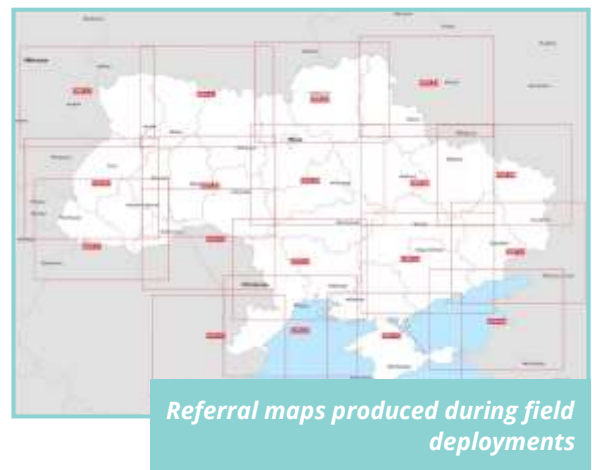
### GIS DEPLOYMENT IN RESPONSE TO THE WAR IN UKRAINE

Two GIS specialists from CartONG have been [deployed as part of MSF GIS team](#), in the framework of the war in Ukraine. During these missions, our specialists evaluated the GIS needs on site (data management, static and dynamic mapping), supported the recruitment and training of a national MSF specialist and accompanied the work of the latter. A large number of PDF maps have been produced on different themes (MSF deployment, infrastructure, health, security issues), as well as foldable map atlases. Several dynamic mapping applications were also produced, some of which have been perpetuated with the extension of the conflict (applications concerning security issues, shelter monitoring and health infrastructure inventory). These interventions allowed the team members involved to experience the challenges of deploying GIS support in an emergency context.

### MAPPING AND DATA MANAGEMENT SUPPORT TO MSF'S GIS CENTRE

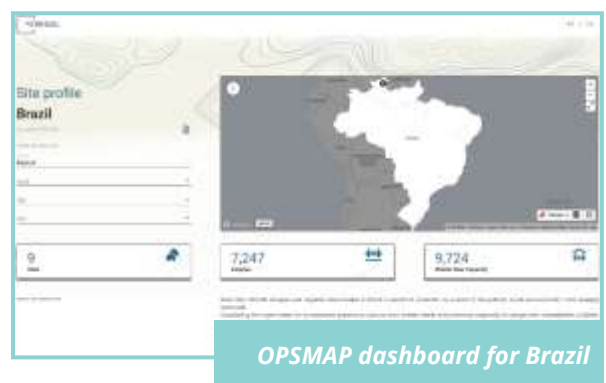
CartONG continued to support the MSF GIS Centre by producing static maps (530 maps produced), geoapps (creation of dynamic mapping outputs, continuous adaptation of the latter to user needs and maintenance tasks), and by supporting on data management issues. Beyond the war in Ukraine, the teams also responded to two other crises in rush mode (emergency mobilization of CartONG teams to provide MSF GIS Centre with a

continuous response capacity to requests from the field, over a given period of time): the earthquake in Afghanistan in June and the floods in Pakistan in September.



### SUPPORT TO UNHCR GLOBAL DATA SERVICE FIELD OPERATIONS

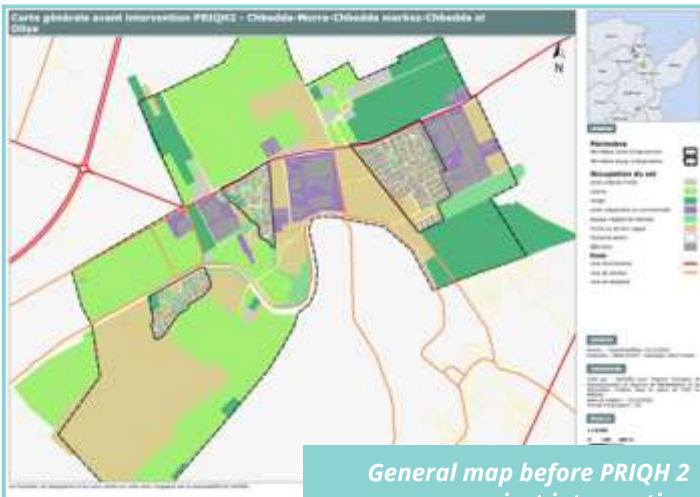
In 2022, CartONG continued its support to the UNHCR Global Data Service field operations. We have been back to Mauritania to assist UNHCR staff on the ground to update the data collected in 2016. We also supported remotely their operations in Ethiopia, building on the site mapping groundwork done through a field mission in 2019. We also ran a total of 32 mapathons to collect data for over 14 sites in Zambia, Chad and Sudan, as well as a country wide effort in Lebanon. In addition to the data collection efforts, we also supported data visualization requests especially on site profiles typically collected by CCCM or other units conducting site needs assessments. In total, ten [OPSMAPs dashboards](#) were published in 2022, while an additional three were under development to be finalized in 2023.



In 2022, the process as well as the design were streamlined further, strengthening the product and making it faster to be deployed.

○ **MAPPING THE IMPACT OF AN INFRASTRUCTURE DEVELOPMENT PROJECT IN TUNISIA**

CartONG was mobilized in the framework of an urban development project in support of the Tunisian National Urban Planning Agency. The objective of this project was the development of cartographic tools making it possible to measure the impact of an infrastructure development project financed by AFD in Tunisia (PRIQH 2 project). This project mobilized skills in the creation of databases for OSM data, creation of cartographic atlases including location maps and statistical maps and quality control of data.



*General map before PRIQH 2 project intervention*

○ **SETTING UP THE TERRE DES HOMMES INFORMATION MANAGEMENT SYSTEM FOR THE UKRAINE RESPONSE**

As part of our support to the humanitarian response to the war in Ukraine, we assisted Terre des hommes in the development of their Ukraine regional response's information management system. It took the form of a needs evaluation, support and in-person training for the Hungary, Moldova and Romania field teams on their Monitoring and Evaluation tools, with a specific focus on their mobile data collection processes.

○ **MAPS FROM HERE & ABROAD: SUBJECTIVE MAPPING FOR MIGRANT POPULATIONS**

For several years, CartONG has set up a project to accompany migrants through subjective mapping workshops. It is an approach to mapping based on a representation outside the traditional codes of cartography, which allows the visualization of subjective, imaginary, sensory or emotional data.

In 2022 we closed [this project](#), supported by the Comité Solidarité Migrants of the Fondation de France and the department of Savoie via the FDVA fund, with a wealth of lessons learned and rich partnerships with actors involved with exiled people in France such as the French Red Cross, the Fédération des Oeuvres Laïques (FOL) and many mental health and social professionals. A total of 48 sensitive mapping workshops were carried out between 2020 and 2022, some of which were co-constructed with an art therapist, for a total of over 150 participants.

These workshops allowed exiled people to address their exile journey and their history in an innovative and personal way, but also to benefit from a break in their sometimes precarious and exhausting daily lives.



*Subjective mapping map produced as part of the "Maps from here & abroad" project*

○ **SUPPORTING SIF'S FOOD SECURITY PROJECT IN MADAGASCAR IN COLLABORATION WITH OSM COMMUNITIES**

In partnership with OpenStreetMap Madagascar, CartONG has concluded in 2022 a [project to support Secours Islamique France on their food security](#) project "Avotia" (co-funded by the French Development Agency), in the Southwest of Madagascar. We developed a hybrid methodology to develop the capacity of SIF teams and strengthen the OpenStreetMap Madagascar community contributing to the project, while including remote and *in situ* data creation on OSM, and participatory workshops with local communities. Following a first training mission in 2021, we organized with OSM-MG a second mission in February/March 2022 in Morombe, to coordinate and conduct a field data collection campaign with SIF's local teams and students from the University of Toliara, including participatory workshops with the local communities in 6 municipalities.



*Coordination of mobile data collection sessions in Morombe, Madagascar*

Through this data collection, the base map of the district was completed (road and hydrographic network, urban tasks, buildings) and all the key points of interest of the territory linked to transportation, health, worship, trade, etc. were surveyed (516 points of interest integrated in OSM). 19 thematic maps were then produced to display the information learnt from the communities, and then shared with them by SIF.

This project allowed us to learn significantly on the methodological but also practical aspects, in particular on how to improve our cooperation with local OSM communities.



19 thematic maps produced and exhibited to the communities

OPEN SOURCE MOBILE DATA COLLECTION TO ASSESS WASH IN DETENTION CENTER

CartONG provided technical support to Terre des hommes for the development of a digital tool, called FACET WinD, to assess sanitary conditions in detention centers. It is a tool composed of mobile forms compatible with ODK/KoboToolbox for data collection.

The data collected can then be easily analyzed via dedicated pre-configured tools (FACET Analyser or Power BI) allowing a standardized visualization of the results. It is built in French, English and Spanish, so that it can be used in various contexts. It was piloted successfully in Ecuador and it is now ready to be deployed in other missions. It is a simple, adapted and ready-to-use solution that uses open source mobile data collection tools and can be carried out online/offline.



FACET WinD dashboard



AFTER ITS SCHOOL AND HEALTHCARE FACILITY VERSIONS, FACET IS NOW AVAILABLE FOR USE IN DETENTION CENTERS. EXISTING NOWHERE ELSE, THIS INNOVATIVE AND FREE ACCESS TOOL WILL IMPROVE THE KNOWLEDGE OF SANITARY CONDITIONS IN PLACES OF DETENTION AND GUIDE THE INTERVENTIONS OF TDH AND THE ENTIRE HUMANITARIAN COMMUNITY. THANKS TO CARTONG'S TECHNICAL SUPPORT, FACET WIND IS NOW 100% DIGITIZED FROM DATA COLLECTION TO ANALYSIS, MAKING IT MUCH EASIER TO USE. - TDH WASH DEPARTMENT



PARTICIPATORY MAPPING IN MAYOTTE FOR DOCTORS OF THE WORLD FRANCE

Doctors of the World France requested CartONG's support in June 2022 to assist in the implementation of participatory mapping workshops as part of a project to raise awareness on the impact of water on the health of communities in two precarious neighborhoods of Mayotte. The dynamics of each neighborhood were difficult for Doctors of the World's teams to understand, so the project evolved towards a participatory approach with the inhabitants. The aims of our intervention were to improve knowledge about the neighborhoods while creating a community mobilization with the inhabitants of the neighborhood.



Participatory mapping workshop in a precarious neighborhood in Mayotte

This project provided objective and precise elements so that the residents could take ownership of the development issues in their neighborhood and then take action. Thanks to the maps produced with the residents, Doctors of the World was also able to improve its operational deployment in the neighborhoods.



CAPACITY BUILDING

CartONG's capacity building activities aim at increasing the autonomy of our partners, by helping them build their methodological, technical and ethical skills around data. This can take various shapes and forms: on-site or remote trainings and awareness raising sessions, peer-to-peer events, as well as individual or team mentoring.

GIS TRAINING FOR THE MSF GIS CENTRE

CartONG provided continuous technical support to the field GIS specialists of the MSF GIS Centre, contributing notably to training sessions on ArcGIS Pro during the 2022 edition of the MSF GIS Week.

## MEAL TRAININGS FOR EXPERTISE FRANCE

CartONG, in partnership with Groupe URD, has created and delivered a training offer with various courses around Monitoring, Evaluation, Accountability and Learning to accompany the implementation of the internal M&E policy of Expertise France for the next three years. CartONG delivered the training to staff both in the field and at the headquarters. In total, four training sessions took place at Expertise France's headquarters in Paris and three sessions were done remotely.

## TRAINING FOR SOLIDARITÉ INTERNATIONALE STAFF ON MOBILE DATA COLLECTION

CartONG was invited to participate in the "week of coordinators" (a week where Solidarités International offers to its staff, program coordinators and technical coordinators, training at their headquarters on various subjects). On this occasion, CartONG ran an introductory session on uMap and advanced features of Excel, presented the latest Kobo Toolbox' functionalities, and gave an overview of various toolboxes as well as the self-assessment tool of the CartONG Learning Corner.

## TRAINING ACTING FOR LIFE TEAMS ON MOBILE DATA COLLECTION TOOLS

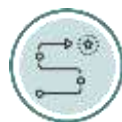
CartONG developed a three-day training cycle to support the Acting for Life project team in creating more efficient monitoring tools. The core of the training was on Excel (two days) while the first day was an introduction to KoboToolbox. Following this first training cycle (delivered on-site), the trained team chose a couple of different subjects on which they wished to be trained further. They chose online mapping, advanced use of KoboToolbox and XLS form language. These were thus the subject of two additional half-day remote learning sessions.

## TRAINING ON MOBILE DATA COLLECTION FOR IRAM

Running of a 3-day training session to introduce the IRAM team in Montpellier to Mobile Data Collection. The teams discovered the theory and tools available through practical exercises around quality-oriented form building and responsible data concepts.



3-day training in Montpellier on Mobile Data Collection for IRAM team



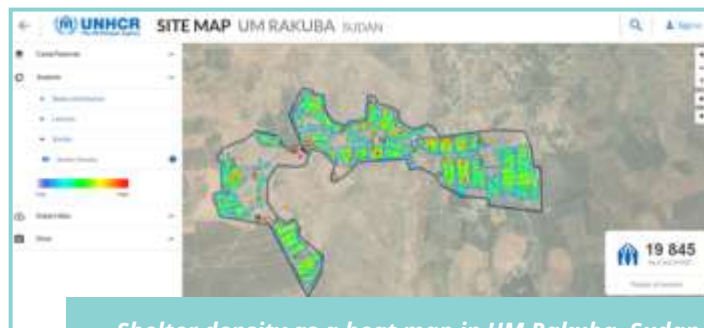
## ORGANIZATIONAL STRATEGIES

*Supporting organizational strategies is one of the specific added values of CartONG. Over the years, we have built on our knowledge of the sector and our continued support of various types of actors to help organizations better understand their needs and think long-term, while providing Information Management strategic advice.*

## IMPROVEMENTS TO UNHCR'S SITE MAPS

As part of our support to UNHCR GDS' organizational strategy, we continued to reflect on, update and improve the site mapping application, which CartONG has been developing and enhancing for more than 5 years now.

In 2022, we added the population figures as KPI at site level. We also included the shelter density analysis and the possibility to load additional UNHCR data sets, as well as improved the analysis on the latrines.



Shelter density as a heat map in UM Rakuba, Sudan

## IMPROVEMENT OF SIDACTION'S M&E SYSTEM

CartONG worked in collaboration with Groupe URD to improve Sidaction's existing Monitoring & Evaluation System. We helped them build a more relevant system, managing more qualitative and global information, and to make it more useful across different teams (Program, Advocacy, etc.). As part of this support we also trained the HQ teams and local partners of Sidaction to the new system.

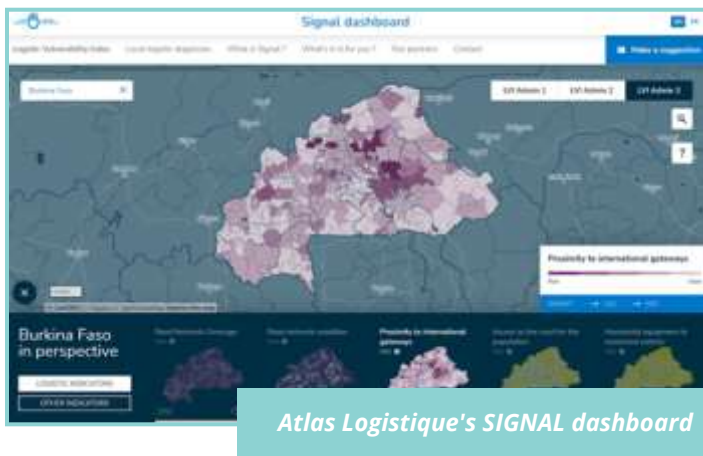
## SUPPORT TO ATLAS LOGISTIQUE'S SIGNAL PROJECT

The Signal project aids humanitarian actors by identifying vulnerable communities to optimize intervention effectiveness. It comprises two key components:

1. The Logistic Vulnerability Index, which offers insights on logistical aspects like road network access, international borders proximity, household motorized vehicles, etc.
2. Logistic diagnostic reports, which provide contextual information on product availability and population accessibility to sales points, enabling refined needs assessment.

In 2022, CartONG created a dashboard to facilitate information access and promote logistical vulnerability data usage. It includes a map visualizing the index and sub-indicators, and a catalog for local diagnostic reports.

CartONG continues to enhance the tool in 2023 by adding new features and information. Training in dashboard administration has been provided to the Signal team for self-sufficient tool updating.



Atlas Logistique's SIGNAL dashboard



## TAILORED TOOLS FOR HQ

To help our counterparts based in headquarters be more effective, we support them in the building of tools to better visualize, understand, report or communicate on their field activities.

### GIS SUPPORT TO UNICEF IN COLLABORATION WITH MAPACTION

CartONG, together with its partner MapAction, is part of a Geospatial Hotline put in place by the Division of Data, Analytics, Planning and Monitoring (DAPM) in UNICEF Headquarters (HQ) to respond to Geospatial requests from various UNICEF HQ units and Country Offices.

As part of this support, in 2022, CartONG and MapAction received several large-scale requests ranging from mapping out Child Poverty and Environmental risks in Laos, as well as other countries and regions, to bespoke maps specifically produced for reporting and publications. CartONG also worked on updating the MICS QGIS Plugin which was developed in 2021. UNICEF [released](#) the Plugin in November 2022.

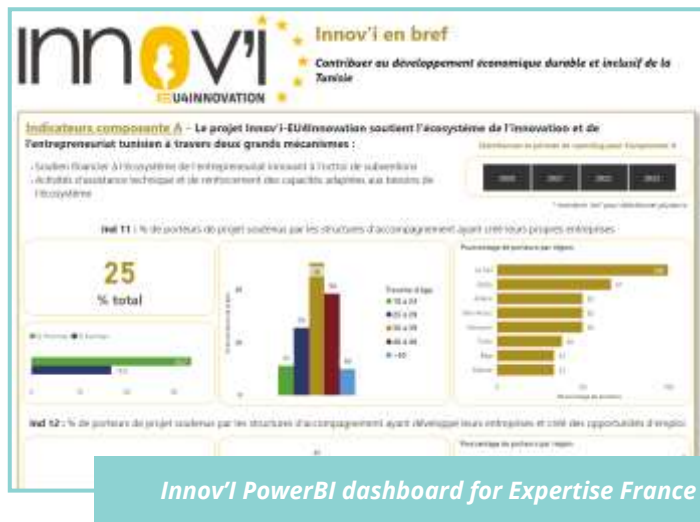
### COUNSELING FAIRTRADE AUSTRALIA-NEW ZEALAND ON MOBILE DATA COLLECTION

CartONG has continued its collaboration with FairTrade Australia-New Zealand, first through technical counseling on MDC software and database management and also by providing regional maps and national maps for its activities in the wider Pacific.

### DATA MANAGEMENT SUPPORT FOR EXPERTISE FRANCE'S INNOV'L PROJECT TO FOSTER ENTREPRENEURSHIP

CartONG supported Expertise France's Tunisia-based [project Innov'l](#) (which aims to support entrepreneurs and foster a stronger and more active local economic environment) through the improvement of its existing data collection system and the development of a PowerBI dashboard that displays key figures and indicators to follow the project's progress.

In addition, CartONG has also provided training to the Expertise France team to ensure the system provided is used in the most suitable way and adaptable to their needs.



Innov'l PowerBI dashboard for Expertise France

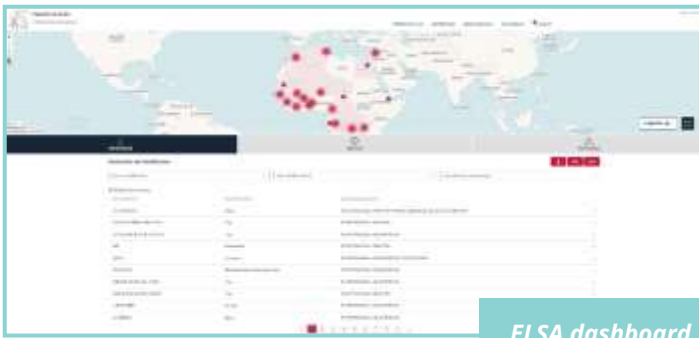
### EMERGENCY ASSESSMENT SYSTEM FOR ACTION AGAINST HUNGER FRANCE

CartONG has developed an emergency alert system for Action Against Hunger France (ACF) on the MDC tool KoboToolbox. This emergency assessment system for field operations is based on a list of standard indicators to evaluate the severity of a crisis and to measure the level of assistance field teams would need from HQ. CartONG also provided mentoring support for ACF team in Nigeria as a follow up to the release of the data analysis toolbox (with ACF's contribution) in early 2022.

### ELSA - DASHBOARD DATABASE MAINTENANCE FOR THE FOLLOW-UP OF AIDS-RELATED ACTIVITIES

ELSA is a collaborative framework that enables four French NGOs to share experiences, coordinate efforts, and pool resources in the fight against AIDS in Africa. These NGOs are the French Movement for Family Planning, Sidaction, Solidarité Sida, and Solthis. Each organization works with numerous partners, and to streamline and coordinate their actions, they use a private website to input information about their missions and partners. This site also helps them prepare new missions and retrieve information for their activity reports. The first version of the website required some bug fixing and some improvements for visualizing, exporting, and searching data according to their needs.

As a result, they enlisted the help of CartONG in 2022 to enhance the database and add a dashboard for easier search and export capabilities.



ELSA dashboard



## KNOWLEDGE BUILDING

CartONG's knowledge building activities aim at helping organizations stay on top of Information Management tools and technologies, by making available various resources. These can be tool benchmarking studies, operational research, sector studies, learning events, case studies or toolkits and other technical documentation. All the public resources of CartONG can be found on the organization's IM Resource Portal - where many external sector resources are also referenced - and on its dedicated "Learning Corner" section (since 2022).

### STRENGTHENING PROGRAM DATA MANAGEMENT WITHIN FRANCOPHONE CSOS

As part of a three-year initiative led by CartONG and co-funded by the French Development Agency and the French Ministry of Europe and Foreign Affairs, CartONG organized different opportunities for inter-NGO exchange around data related topics. These included community of practice days, webinars, feedback sessions, among others. In addition, CartONG made available practical technical and methodological toolboxes for field teams to support the strengthening of NGOs' responsible data practices. Within the framework of this project, 2022 has also been the opportunity for CartONG to have its first external project evaluation.

This evaluation highlighted the relevance of the project to the needs and expectations of Francophone CSOs, its coherence with current issues in the Humanitarian Aid and International Development sector, and the quality of the deliverables produced.



IT IS THANKS TO THE PROJECT [...] THAT WE WERE ABLE TO PUT THE SUBJECT OF PROGRAM DATA MANAGEMENT ON THE AGENDA IN MY ORGANIZATION. IT HAS BECOME A TOPIC IN ITSELF, INDEPENDENT OF DEPARTMENTAL OR DATA TYPE LOGIC AS IT WAS BEFORE WITH A SILO-BASED APPROACH. THE PROJECT ALLOWED US TO START A DIALOGUE WITHIN THE ORGANIZATION, TO REORGANIZE OURSELVES BY FORMING A CROSS-FUNCTIONAL UNIT ON THESE SUBJECTS AND TO HAVE AN ASSOCIATED BUDGET.

- PARTNER OF THE PROJECT



### To learn more...

The final evaluation of the Strengthening Program Data Management project has been conducted for the purposes of collective learning, accountability and transparency. Read the evaluation [here](#) - in French.

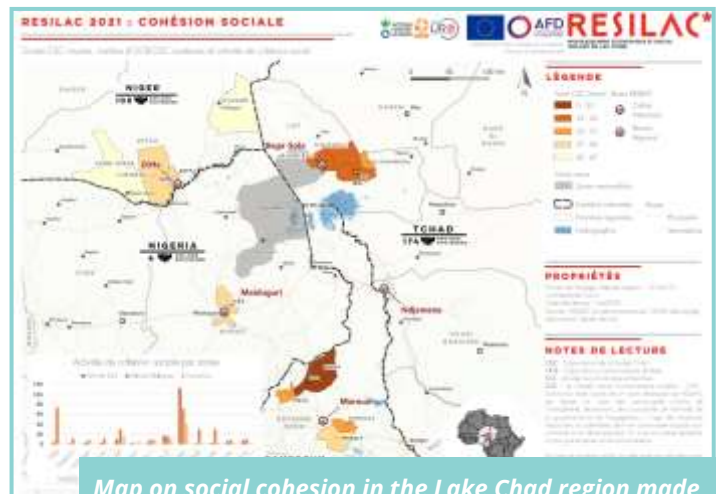


5th Exchange Day on program data management in May 2022

### DATA LITERACY AND MAPPING FOR THE RESILAC CONSORTIUM

CartONG's 4-year support to the RESILAC (Inclusive Economic and Social Recovery of Lake Chad) consortium with Groupe URD, Action Against Hunger (ACF) and Care, in partnership with the CCFD - Terre Solidaire network, Search For Common Ground as well as local organizations in the countries of intervention ended in 2022.

CartONG's contribution took different shapes over the years: an IM Information Management needs assessment, a Power BI project dashboard, and some data literacy and mapping training and support. A learning paper presenting the avenues to move towards a more solid and better integrated information management approach was also written with Groupe URD to help prepare for the next phase of the project starting in 2023.



Map on social cohesion in the Lake Chad region made by CartONG for RESILAC

# GIS

The GIS team is composed of a multidisciplinary team working on the full range of Geographic Information Systems. Divided in 3 main fields of expertise, we cover map production (both static and online), we have experts working on data management and data interoperability, and last but not least, we support the server side, working on the installation and maintenance of applications.

In 2022, the GIS pole continued to provide support to humanitarian partners (in particular UNHCR and Doctors Without Borders) by mobilizing the team's skills in static and dynamic mapping, through training on various technologies and by providing support in the field via several large-scale missions.

## TRAINING

As in previous years, CartONG's GIS team has given introductory training in mapping with practical exercises on QGIS to the field teams of Doctors Without Borders, AFD and HAID (Myanmar). In addition to this training, which has already been tried and tested several times and constantly improved, other training sessions on uMap, on mapping for publications and on ArcGIS Field Maps, ArcGIS Pro and ArcGIS Online were also given. Finally, the team intervened in universities to raise awareness on the use of GIS in humanitarian projects among GIS or international cooperation students.

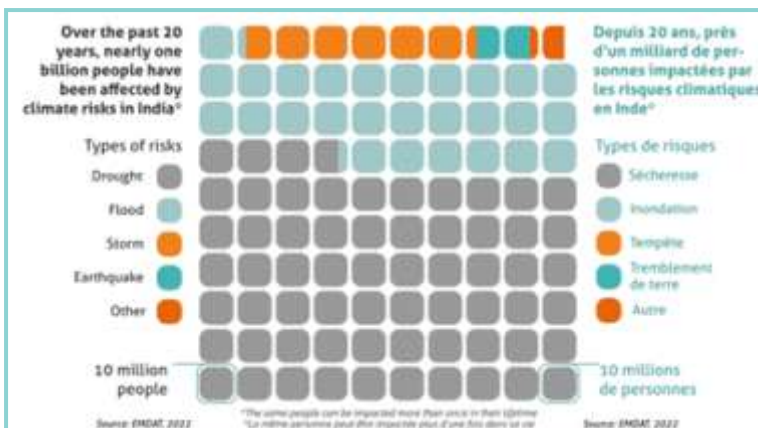
## DATA PROCESSING

GIS is not only about cartographic production. A whole underlying and less visible work, on the Databases in particular, is necessary to produce high-quality maps, to facilitate their production, or simply to make the data accessible. The team's data processing skills have been mobilized through the GDS project for UNHCR in 2022, via the implementation of a set of quality control scripts on their databases, developed in Python. These scripts, which run on a weekly basis, check that the fields are properly completed and without input errors, that the layers do not contain geometric errors or inconsistencies between elements. Also for UNHCR, background maps in the form of vector tiles have been generated from the Site Mapping Database to be used more easily in applications such as ArcGIS Online or Power BI.

## STATIC & DYNAMIC MAPPING / MAPPING FOR PUBLICATIONS

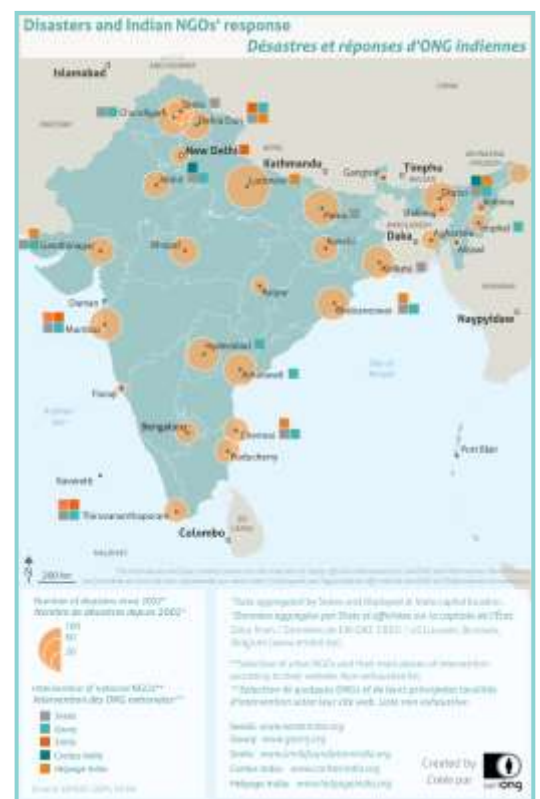
In 2022, we made about 700 maps on more than 60 countries. From Laos to South Sudan, from epidemiological or security monitoring to mapping of producers (coffee, cocoa, etc.) in the Pacific, we continued to support our partners in the production of maps both for monitoring their field operations and for decision-making or advocacy activities.

Our mapping interventions have also expanded this year through our first contribution to the [Humanitarian Alternatives review](#). CartONG produced a map and a visual on the vulnerability of India to extreme weather events and the involvement of national NGOs as part of the response.



## A FEW HIGHLIGHTS

- **MISSIONS IN UKRAINE FOR MSF** - 2 successive missions to respond to the war in Ukraine and to set up the first mapping monitoring tools for MSF.
- **MISSION IN MAURITANIA FOR UNHCR** - a mission to update the data of the M'bera site and to train the field teams in data collection with ArcGIS Field Maps.
- **GIS WEEK IN PRAGUE** within the framework of the partnership with MSF: an opportunity to meet all the GIS Centre field specialists and to exchange on best practices.







CartONG's IM/MDC team supports many of the non-cartographic activities of NGOs and International Organizations, from the collection of program data to its analysis and sharing.

## MAIN TECHNICAL AND EXPERTISE FOCUS

2022 was a year of consolidation of our expertise on different topics of the day in terms of Information Management. Many of our projects supported NGOs, consortiums and IOs improve their Monitoring & Evaluation systems, be it on the methodological side or the more technical side.

The methodological side corresponded to thinking through the needed tools and approaches to make the systems to collect and access qualitative and quantitative information concerning activities more efficient and effective, and helping partners set up the systems accordingly. This was done at field level with Terre des hommes in the Ukrainian context through field missions and in-person trainings, as well as at organizational level in collaboration with Groupe URD to support organizations like ASMAE or Sidaction, or through direct capacity building with a training cycle on how to conduct the Monitoring and Evaluation of a project for Expertise France staff.

The more technical side was on implementing and exploring more advanced aspects concerning some of the program data technologies of the day: Power BI dashboards (including the exploration of some more advanced components such as building multi-language Power Bi dashboards or using parameters for data modeling), but also exploring state of the art tech such as the implementation of R for analysis & reporting.

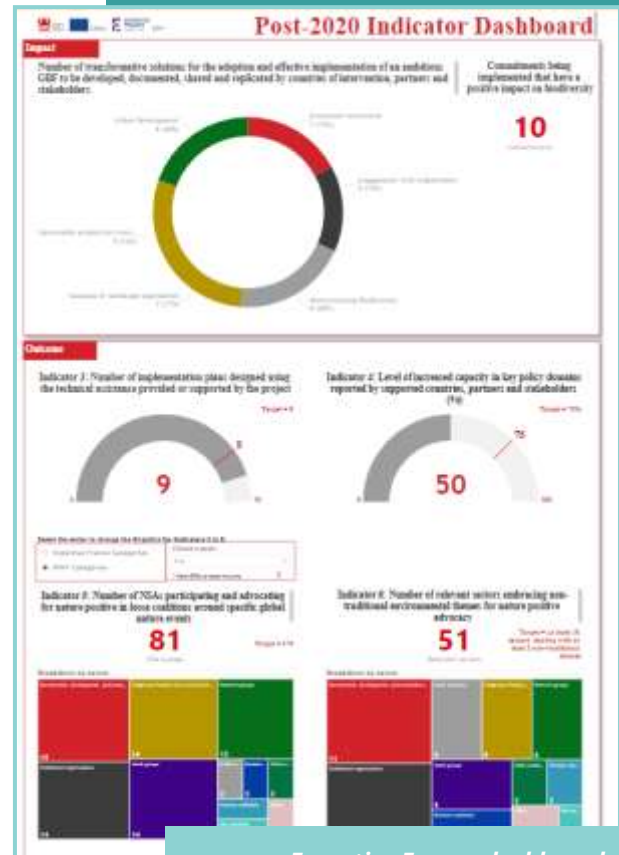
On more transversal activities, it was a year with a strong focus on responsible data, be it in terms of data protection, but also more widely data literacy. We therefore produced a lot of resources for the sector on these topics, and had many related activities with partners, such as our support to German NGOs through a new data protection training organized through VENRO, the German equivalent of Coordination Sud.



Training during a 3-week mission in support of UNHCR's first Health Access and Utilization Survey in Pakistan

## PUBLICATIONS & EVENTS

- ➔ Publication of a paper on **IMPROVING THE MONITORING & EVALUATION SYSTEM** of an aid organization *(In French)*
- ➔ Joint publication with Groupe URD of a **LESSONS PAPER ON INFORMATION MANAGEMENT PRACTICES** within the RESILAC consortium *(In French)*
- ➔ **SEMINAR ON MONITORING & EVALUATION OF DEVELOPMENT PROJECTS** organized by IRAM and the University of Versailles Saint Quentin
- ➔ **GROUPE URD AUTUMN SCHOOL ON HUMANITARIAN AID** - "Taking a new look at 'quality' in today's context of standards and restrictions"



Expertise France dashboard

# PARTICIPATORY MAPPING

CartONG's participatory mapping team supports local and international solidarity actors in the implementation of their own projects by bringing its expertise on participatory and subjective mapping methodologies. It also carries out several projects directly.

## DEFINITION OF PRIORITIES WITH A REINFORCED TEAM

The Participatory Mapping Pole has continued to develop, with 5 permanent staff members supported on a daily basis by 2 civic services and a close collaboration with the association's volunteers. Our team has defined its competences around 4 main axes:

- Mapping with OpenStreetMap, free and low tech tools
- Participatory mapping
- Subjective mapping
- The development of volunteerism

These skills were used to support small or medium-sized international and local organizations (Habitat Cité, CEFREPADE, Avec l'Ethiopie), and development projects. Projects linked in particular to the adaptation to climate change, to the challenges of precarious urban neighborhoods and to assisting migrants. Complementary skills that we have strengthened over the past several years while cultivating the originality of our approaches by proposing alternative hybrid solutions that are light and accessible to all.

## LEVERAGING OUR SKILLS TO DEVELOP NEW PROJECTS AND COLLABORATIONS

In 2022, the pole's novelty were the Education for Citizenship and International Solidarity projects, which followed several experiments conducted in previous years. Two projects were launched: Activ'Ecsi and CartODD.

They allowed us to consolidate our tools and the format of our activities, such as the mapathons, to make young people aware of the stakes of humanitarian aid and international development. It was also an opportunity to strengthen our relationships with humanitarian and development organizations in our region; links that are already leading to new collaborations, such as the one with PSS and Arcade around the improvement of reference maps of field interventions, training in field mapping for local teams and the realization of specific business maps.

Finally, we also closed the project "Maps from here and abroad", launched in 2018, which had since undergone several changes. This has allowed us today to continue the activities for migrants in France around two approaches: mapping activities as psychosocial support and digital mediation with the MapInclusive project.



### A FEW HIGHLIGHTS

- ➔ Strengthening our **PORTFOLIO** of Education to Citizenship and International Solidarity project activities.
- ➔ We facilitated **167 MAPPING ACTIVITIES ON OSM** that allowed us to map 34 projects in support of 10 organizations.

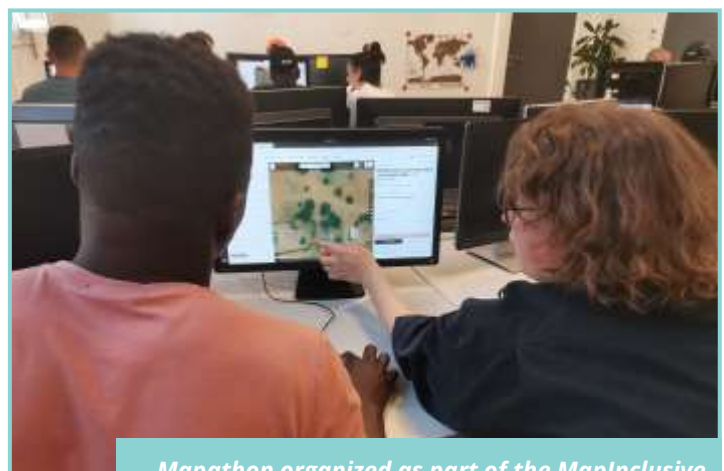


### EVENTS

- ➔ Participation in **STATE OF THE MAP FRANCE**
- ➔ Participation in **MARCHÉ DES CONTINENTS**
- ➔ Participation in **SOLIWAY**



*Signature of the ACTIV'ECSI project at the French Development Agency, March 2022*



*Mapathon organized as part of the MapInclusive project with migrant populations, July 2022*

# WEB DEVELOPMENT

The WebDev team is composed of a large variety of profiles, giving us more flexibility to implement a wide range of web projects in support of our partners. In short, the team gathers three main profiles: full stack web developers - some specialized in front-end and some in back-end technologies; staff loving scripts and working on the data side; and finally, taken from the AGILE world, products owners who oversee the full development process as well as and, more importantly, make sure we understand and meet users requirements.

## 4 MAIN POLE PRIORITIES FOR 2022

In 2022 the pole determined 4 main areas of focus that were then worked on throughout the year:

- **OPEN SOURCE:** how to conceive products to make them adaptable and reusable.
- **MONITOR IMPACT:** how to properly monitor the impact of projects after their deployment.
- **GREEN IT:** how to rethink some practices (coding, hosting, functional need refinement) in order to have the lowest environmental impact.
- **AGILE:** linked to CartONG's strategy, "agilize" and standardize our workflows and increase the involvement of partners in projects.

## STANDARDIZATION OF OUR TECHNICAL STACK

The CartONG web development team having grown significantly during the last few years, 2022 was also a year of focus on standardizing the technical languages and frameworks used by the team. This helps to ensure better maintenance, technical coherence amongst our projects and the capitalization of team skills. Strongly oriented on open-source solutions, the team agreed on the set of tools (the "stack") that would correspond to each type of project needs.

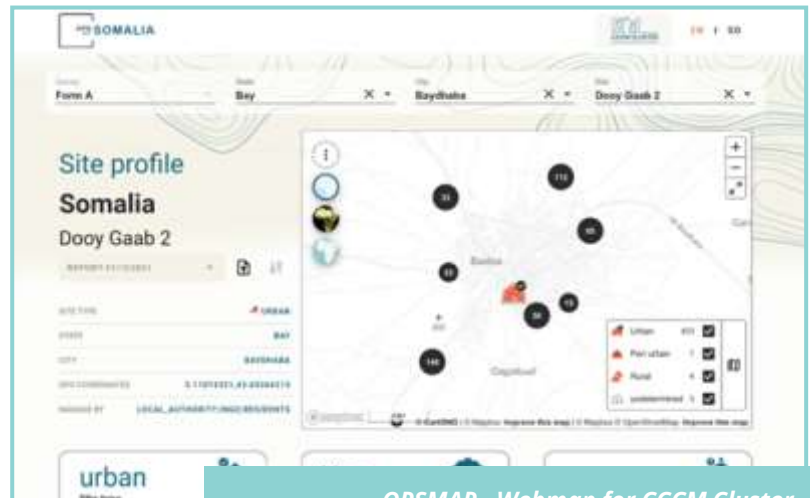
## INDUSTRIALIZATION OF OUR INTERNAL PROCESSES

With an aim to improve the quality of products and also internal processes, an achievement of the pole was to include continuous deployment of updates to ship the latest changes on production. Other good practices were implemented, including for example code review between developers, which increases the quality of products and makes the team skills evolve through experience sharing.



### A FEW HIGHLIGHTS

- Working on **4 POLES AXES**
- **TECHNICAL WATCH** on:
  - MapLibre GL JS
  - TypeScript
  - Vue 3
  - Symfony - API Platform



OPSMAP - Webmap for CCCM Cluster



Ensemble contre la peine de mort - Death Penalty Webmap

# RESOURCE CENTER

CartONG is a multidisciplinary resource and expertise center, helping a variety of actors of the sector - from local and international non-governmental organizations to international organizations and public institutions - achieve more effective data practices. As a resource center, our activities have a common objective, namely, to promote the autonomization of all actors working in the aid sector by helping them navigate the fast-evolving world of program data technologies and tools. Beyond the direct support to many organizations presented in other sections of this report, we also support the sector as a whole by making available technical, methodological and strategic resources in French and English via a platform that exists since 2021, the [IM Resource Portal](#). This portal was to a great extent funded by the French Development Agency through its support to CartONG's initiative to strengthen the data practices of francophone NGOs.

A study conducted by CartONG in 2020 on the program data practices, needs and stakes of international cooperation NGOs, revealed that "less than a quarter of people responsible for IM within their CSOs detain all or part of the skills required for the positions they occupy". CartONG's work on the IM portal is a step forward in the professionalization of Information Management, to help actors by making one entry point available for them concerning resources of interest, with a curated sector watch that we operate. This work helps contribute to having practitioners more and more knowledgeable, even though there is still work to be done (as our 2022 study on training practices showed) to ensure that professionals are no longer only trained on the job.

## Over the year

**130+** PUBLICATIONS  
INCLUDING RESOURCES,  
BLOG POSTS, TRAINING  
MATERIALS, TOOLBOXES,  
AND TOOLS



**22,180+**  
UNIQUE USERS



**6,800+** UNIQUE  
DOWNLOADS

## LAUNCH OF THE LEARNING CORNER

To go further on this point, in 2022 CartONG launched the IM Resource Portal's [Learning Corner](#). Building on the very positive experience with the MDC Toolkit first published in 2019 thanks to Terre des hommes, which became a reference for many NGOs, CartONG took this initiative to scale by making available a space for self-learning for international cooperation practitioners wishing to access relevant guidance for the choice of tools and implementation of good practices.

To quote two big French humanitarian NGOs:



THANKS A LOT, I USE ALL YOUR RESOURCES TO TRAIN OUR FIELD TEAMS IN PROGRAM DATA!



WE INCLUDE THE LEARNING CORNER DIRECTLY IN OUR BRIEFINGS!



The Learning Corner therefore at the end of 2022 comprised 8 toolboxes of which 6 were new (First steps with program data, Excel, Data Analysis, Data visualization, Responsible Data, Mapping & GIS), as well as various tools (the program data self-assessment methodology, a guide to evaluating Information Management components of programs, etc.), and training material to help discover program data, Excel or responsible data concepts.

## “STAKES OF THE DAY” WEBINAR SERIES IN FRENCH

Five webinars were organized in June 2022 to help francophone NGOs better grasp some of the technological and technical stakes that concern them. Knowledgeable practitioners from numerous NGOs and specialist organizations shared their insights in these complex topics that can be hard to get a grasp of. These webinars are available on our [YouTube channel](#).



## STUDY ON PROGRAM DATA MANAGEMENT TRAINING PRACTICES - IN FRENCH

In its previous study [“Program Data: The silver bullet of the humanitarian and development sectors? Panorama of the practices and needs of francophone CSOs”](#), published in September 2020, CartONG noted that “according to the [professionals interviewed], less than a quarter of the people in charge of Information Management within their Civil Society Organization (CSO) have all or part of the necessary skills for the positions they hold”, implying “gaps in the teams in charge of Information Management of different types: methodological, technical and strategic”.

Having teams trained in Program Data Management is essential for CSOs today to ensure quality analyses, support operational decisions and better help and protect vulnerable populations by ensuring responsible data management.

In the continuity of CartONG's reflection on the useful skills in program data management, first via the [“HR Pack - Program data management for Humanitarian Aid and International Development CSOs”](#) (published in March 2021), our teams looked at training practices in program data management, by studying the obstacles to increasing the skills of professionals in the sector and released a groundbreaking study in March 2022 to share their findings on the subject.

This [study](#), available in French only, first looks at the issues related to the training of Humanitarian Aid and International Development actors in GDoP and then details how they are currently trained in the subject. It then provides a list of recommendations for CSOs, training institutes, French higher education institutions and, finally, humanitarian and development professionals to initiate and encourage an overall increase in the sector's skill on the subject.



[Read this study here](#)



## A FEW KEY PUBLICATIONS THIS YEAR

- A more practical v2 of [HR set of tools](#) providing methodological support to help CSOs better structure their human resources on the topic.
- A [learning paper](#) centralizing 11 pointers for CSOs to strengthen their program data practices.



External blog post contribution in 2022

- ➔ [A network-centric approach to data literacy](#), Melissa El Hamouch, IFRC

# VOLUNTEERS' CORNER

The easing of pandemic-related restrictions allowed us to hold in-person activities more often. In June, our volunteers and staff participated in the first in-person Get-Together since 2019, a weekend to get to know each other and discuss our strategy! Apart from that, we organized 16 in-person mapathons, 2 volunteer "Happy Hours" in Chambéry, and 1 informal meeting in Paris. The GeOnG was also an opportunity for our volunteers and staff to work together!

## STRUCTURING AND PROMOTING VOLUNTEER ACTIVITIES

In 2022, we were able to structure and develop our volunteer activities thanks to the funding received from the Ministry of Europe and Foreign Affairs, via the Fonjep VEC. Thanks to this co-funding, CartONG private funds and funding from the FDVA (Fond pour le Développement de la Vie Associative), we were able to hire a new employee in charge of volunteering and partnerships and to develop our work around 4 axes:

- **Structuring our offer of volunteering activities.** We implemented a volunteering convention, started including the time spent by our volunteers in our accounting, created a satisfaction form for volunteers to fill at the end of each mission and organized 3 training sessions (a theoretical one about the humanitarian and development sector and two practical ones on QGIS and on GoGoCarto).
- **Increasing our support to small and medium-sized NGOs.** Our volunteers participated in 22 missions, supporting a total of 20 organizations. Most (16) of these missions were mapping or GIS projects, 5 were IM or MDC projects and 1 was a web development project.
- **Building new partnerships with firms and local administrations to promote e-volunteering for working age people.** CartONG organized 7 mapathons in firms and local administrations in 2022. 4 of these were organized and facilitated by volunteers. CartONG also signed a convention for a skills-based sponsorship with Magellium. Thanks to this convention, staff from this firm will be helping our association in different endeavors.
- **Promoting e-volunteering opportunities and our projects involving volunteers.** We promoted our volunteering activities at 3 events: the International Geography Festival (FIG) and 2 local festivals (the Marché des Continents and Migrant'Scène).

### HIGHLIGHTS OF THE YEAR

- **70** members
- **59** mapathons
- **42** validation sessions
- **1,255** hours of contribution on OpenStreetMap
- **29** volunteer missions
- **3,581** hours of involvement from our volunteers



*Volunteers and civic service volunteers facilitating a mapathon in Cap Gemini, September 2022*

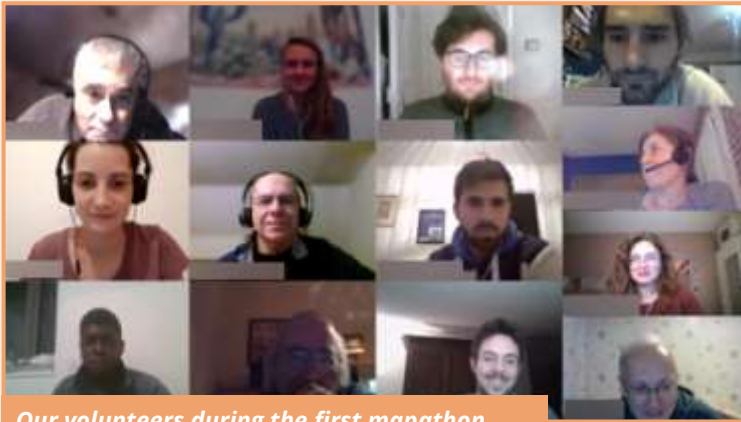
## QUICK OVERVIEW OF THE ACTIONS CARRIED OUT BY OUR VOLUNTEERS

Our volunteers supported CartONG with the **following endeavors**:

- Definition and implementation of a new governance for CartONG.
- Organization of quarterly mapathons in Arvalis, to raise awareness on collaborative mapping in this firm.
- Development of the infrastructure of a service that would generate maps with little to no human input, according to the type of emergency. This mission is ongoing and is led by a staff member.
- Building a skills-based sponsorship between CartONG and Magellium.
- Support to the organization of the GeOnG.
- Facilitation of webinars: 7 of our volunteers presented a project to the CartONG community.
- Creating an interactive map (using Lizmap) of the water pollution samples collected by OceanEye, as part of a staff project.
- Supporting the ICRC at the beginning of the war in Ukraine, by enriching their database with the location data of Red Cross societies in 4 countries sharing a border with Ukraine, on ArcGIS Online. They mapped out more than 700 locations in one month.
- Creating a QGIS map of Bobo-Dioulasso (Burkina Faso) for the Agency for Regional Development and the CEFREPADE. The map was used to define a waste collection and transport strategy for the city.
- Mapping close to 2,800 buildings to create a basemap of informal neighborhoods of Phnom Penh (Cambodia) that Planète Enfants & Développement used to implement a participatory mapping project.

# IN ACTION

## SUPPORTING A WASH PROGRAM IN ETHIOPIA VIA TRAINING A COLLABORATIVE MAPPING



*Our volunteers during the first mapathon for AVEC l’Ethiopie*

Different groups of volunteers worked together to support AVEC l’Ethiopie, a French association that has been implementing solutions to improve living conditions in the city of Debre Tabor (Ethiopia) for 30 years.

The first group completed and updated the base map of the city and its surroundings during 4 mapathons. Then, our validation team worked on this project for 6 validation sessions, to ensure the quality of the data that was added to OpenStreetMap. Then a volunteer remotely trained the field team of AVEC l’Ethiopie on OSMAnd, so that they could finalize the geolocalization of their WASH solutions. In 2023, another team will create an interactive map to visualize this data, helping the association to decide where to implement future installations.

### ASSOCIATIVE LIFE

For the first time since 2019, we were able to meet in person for the Get-Together. This long awaited gathering was an opportunity for the staff and volunteers to meet, to discuss as a group about the future of CartONG and of its volunteer activities. The General Assembly saw the election of a new board and the adoption of an action plan for 2022-2023 for the volunteer and associative life.

This plan has 4 priorities:

- Ensuring that volunteers can take an active role in CartONG,
- Consolidating a work and involvement framework adapted to the whole volunteer and staff community,
- Ensuring a smooth and horizontal communication,
- Structuring the volunteer network.

In 2022, we maintained 2 regular online volunteer meet-ups: the weekly mapathons and the monthly volunteer happy hour. The latter are divided into 2 phases: the first is a time to introduce new volunteers and present the association while the second is a webinar during which volunteers or staff members can present a subject related to international solidarity and mapping or data management.



03

FINANCIAL REPORT

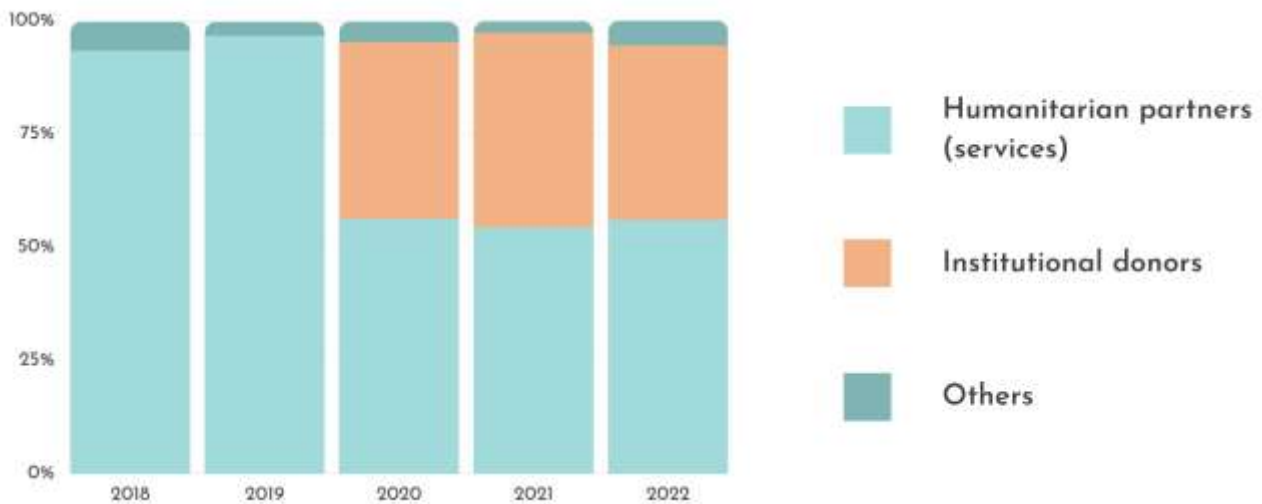


## RESOURCES

After several years of strong growth, CartONG continued its upward trend with a 6.6% increase in budget, reaching a total of €1,949,260.26 (operating outputs). Growth, however, was less substantial than that seen over the last two years (between 15% and 30%).

For the most part, our budget continues to be financed by our humanitarian partners in the form of service provision (56%), with a significant proportion coming from public and institutional donors (38.6%). Grants have remained relatively constant since 2020. The remainder of our resources comes from donations from corporate partners (0.1%), sponsors for the GeOnG event (2.5%), training sessions (2.4%), individual donations and membership fees (0.1%), and other miscellaneous sources (0.3%).

Our partners MSF (41%) and UNHCR (26%) continued to be by far the biggest contributors to our budget, up 6.4%. We also acquired a number of new partners and donors this year (Doctors of the World, Fédération des Acteurs de la Solidarité, ASMAE, Erasmus+, etc.) and maintained relations with several others - notably the French Development Agency, which is now one of our main donors. Our need to diversify sources of income remains a long-term objective, and we can see that the % of resources contributed by MSF and UNHCR continues to shrink.



## EXPENSES

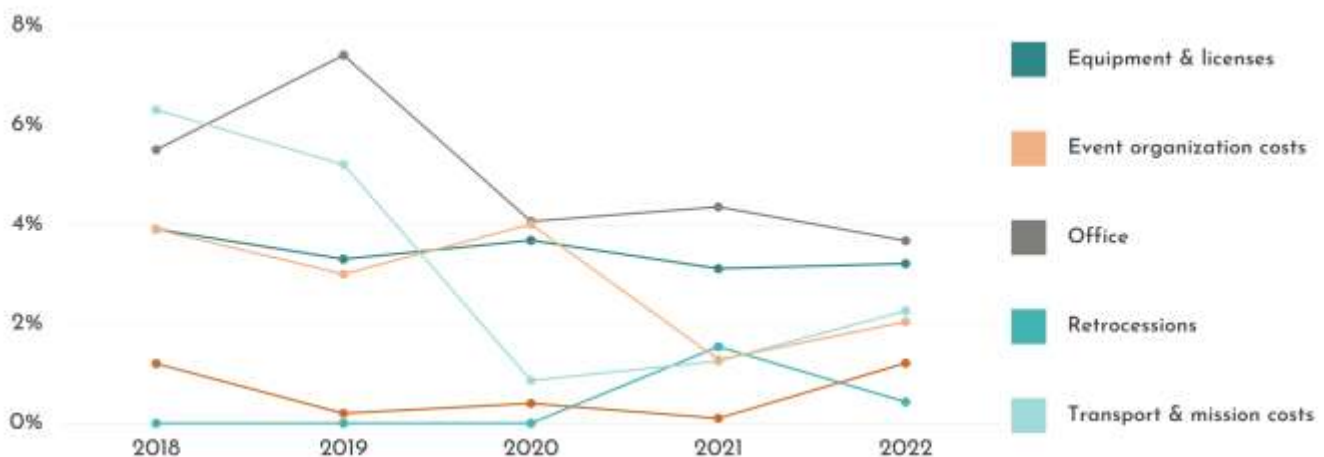
### General overview

Our operating expenses amounted to €2,046,203.61 in 2022, compared with €1,819,843.63 in 2021, an increase of 12.4%.

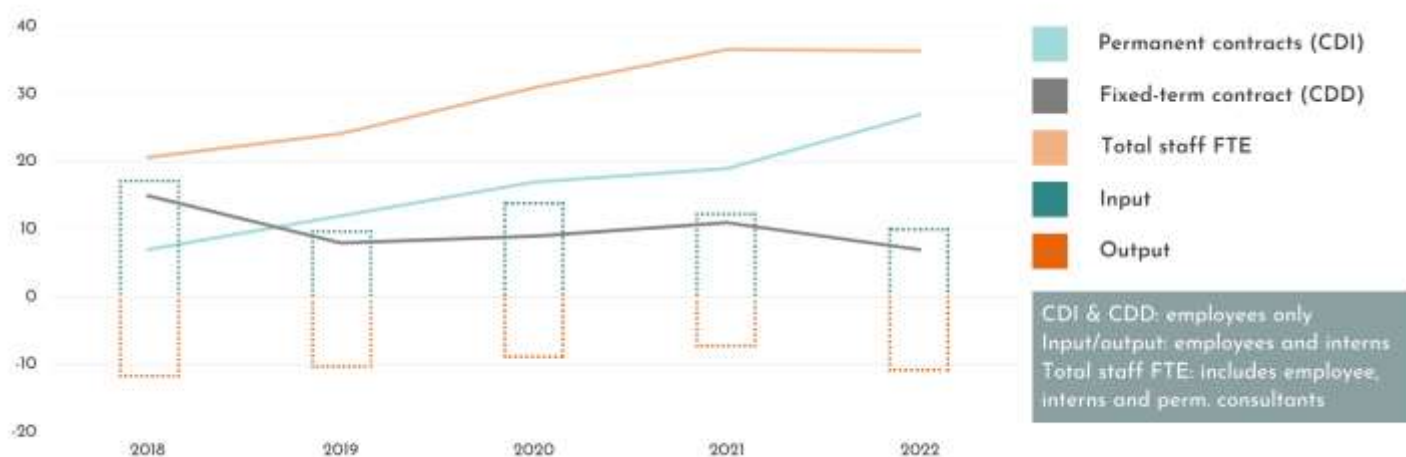
They are mainly made up of personnel expenses (salaries & social security charges, consultants' remuneration and payroll taxes), which represent around 90% of total operating expenses on average over the last few years.

These have risen significantly in 2022, and at a higher rate than our outputs (+12% vs. +6.5%), see specific point on Human Resources.

Even if their structure remains fairly similar to that observed in 2021, other current expenditure items, whose overall volume is much more limited (€225k), are also on the rise, mainly due to the GeOnG and the gradual resumption of travel and mission expenses since the global health situation has improved. In 2022, travel expenses doubled compared with 2021, and this trend is set to continue over the coming years, with a renewed emphasis on travel in France and abroad.



## Focus on Human Resources



As we have seen, Human Resources continue to account for the lion's share of our expenses - almost 90% - with, in particular, a significant rise in payroll costs and associated social security charges in 2022, reflecting both the association's determination to preserve employees' purchasing power in a period of high inflation, continue to attract the skills essential to the development of our activities and the consequent increase in support functions, and to pursue the policy initiated in recent years of securing our salaried positions (the proportion of permanent staff having risen by 42% compared with the previous year, while at the same time the number of fixed-term contracts fell by 36% over the same period).

The increase in consultancy costs in 2022 (+30%) is mainly explained by the lack of internal resources for certain skills required for some of our projects, particularly in web development.

## EARNINGS FOR THE YEAR AND THEIR APPROPRIATION

1) All the above-mentioned factors are responsible for the increase in our expenses, to which should be added the implementation of CartONG's multi-year strategy and its action plan for 2022, and the reflection undertaken on the evolution of its governance, which has de facto considerably increased the association's expenses. All these internal investments, coupled with a year of organizing the GeOnG event (with a loss of around €50,000), as well as various actions taken to offset inflation in France and abroad, have contributed to a negative net result for CartONG in 2022, to the tune of €90,286.46, despite a strong increase in our income.

Although CartONG still retains sufficient associative equity to cope with this deficit, measures have been initiated to move towards balanced accounts in 2023, a year which will be marked by further major structural changes linked to its governance, notably with the arrival of an Executive Director.

2) It is proposed that the Annual General Assembly allocate this negative 2022 result to the CartONG association's associative funds, as retained earnings.

In 2022, we mainly strengthened the GIS team (excluding job renewals) with the recruitment of a Product Owner and a Program Manager to manage the partnership with Doctors Without Borders. In addition, part of the team will be renewed, partly as a result of the structural changes underway.

In total, we will have 34 employees (non-FTE, 31 FTE) by the end of 2022 (including 27 permanent contracts and 7 fixed-term contracts), in addition to our interns (~3/year), civic service volunteers (~2/year), long-term consultants (5 pers.) and temporary consultants (10 pers.).

Thus, in 2022, CartONG will have 35 salaried employees and 20 non-salaried collaborators, similar to previous years.

After this allocation, the association's total equity will amount to €352,216.



Our full financial statements for the year 2022, compiled by our accountant and certified by our auditor, are available to partners and donors, contact us at: [info@cartong.org](mailto:info@cartong.org) to receive a copy.

# ACRONYMS

<b>ACF</b>	Action Against Hunger	<b>IRAM</b>	Institute of Research and Application of Development Methods
<b>AFD</b>	French Development Agency	<b>KPI</b>	Key Performance Indicator
<b>AIDS</b>	Acquired immunodeficiency syndrome	<b>M&amp;E</b>	Monitoring and Evaluation
<b>DPAM</b>	Data, Planning and Monitoring	<b>MDC</b>	Mobile Data Collection
<b>CCCM</b>	Camp Coordination and Camp Management	<b>MEAL</b>	Monitoring, Evaluation, Accountability and Learning
<b>CSO</b>	Civil Society Organization	<b>MSF</b>	Doctors Without Borders
	Analytics, Planning and Monitoring	<b>NGO</b>	Non-Governmental Organization
<b>EF</b>	Expertise France	<b>OPSMAP</b>	Web applications that display the main indicators collected on IDPs sites
<b>FACET</b>	Facility evaluation tool	<b>OSM</b>	OpenStreetMap
<b>FDVA</b>	Fund for the development of associative life	<b>OSM-MG</b>	OpenStreetMap Madagascar
<b>FOL</b>	Federation of Secular Organizations	<b>PSS</b>	Pays de Savoie solidaires
<b>FONJEP</b>	Fonds de Coopération de Jeunesse et d'Education Populaire	<b>RESILAC</b>	Inclusive Economic and Social Recovery Project for Lake Chad
	Headquarters	<b>SI</b>	Solidarités International
<b>GDS</b>	Global Data Services	<b>SIF</b>	Secours Islamique France
<b>GIS</b>	Geographic Information System	<b>TDH</b>	Terre des hommes
<b>HQ</b>	Headquarters	<b>UNHCR</b>	United Nations High Commissioner for Refugees
<b>ICRC</b>	International Committee of the Red Cross	<b>VEC</b>	Volontariat d'échanges et de compétences
<b>IFRC</b>	International Federation of Red Cross and Red Crescent Societies	<b>WASH</b>	Water, Sanitation and Hygiene
<b>IM</b>	Information Management		
<b>IO</b>	International Organization		


# ACKNOWLEDGEMENTS


Acting For Life / Action Against Hunger France / ActivityInfo / ALNAP / Apoyo Urbano / Arcade / Arvalis / Asmae / ATLAS Logistique / AVEC l'Éthiopie / Bangladesh Open Innovation Lab / Bioforce / CEFREPADE / Centre d'études et de documentation économiques, juridiques et sociales / Centre National de la Recherche Scientifique / Chambéry Solidarité Internationale / Ciedel / City of Chambéry / Civic Service Agency / Coordination Sud / COSMHANNE / Dahari / Doctors of the World France / Doctors Without Borders / ELSA / engageSPARK / Erasmus+ / Esri / Expertise France / FairTrade International / FairTrade New-Zealand / FAS/RESAP / Fédération des acteurs de la solidarité / Fédération des Oeuvres Laïques / Fondation de France / Fonds de développement à la vie associative / FONJEP / French Development Agency / French Movement for Family Planning / French Red Cross / GEODESK / GeoID / Gesellschaft für Internationale Zusammenarbeit / Grdr Migration-Citoyenneté-Développement / GRET / Groupe URD / H2H Network / Habitat Cité / Humanitarian Alternatives / Humanitarian OpenStreetMap Team / Humanity & Inclusion / IEDES / International Cocoa Initiative / International Committee of the Red Cross / International Federation of Red Cross and Red Crescent Societies / IRAM / IRCOM / Key Aid Consulting / Kreditanstalt für Wiederaufbau / Locana / Magellium / MapAction / MapKibera / Max Havelaar France / Meta / MindChangers / Ministry of Europe and Foreign Affairs / Missing Maps / Nitidae / OceanEye / OpenMap Development Tanzania / OpenStreetMap Benin / OpenStreetMap DRC / OpenStreetMap Ghana / OpenStreetMap Kerala / OpenStreetMap Madagascar / OpenStreetMap Senegal / Palladium / Pays de Savoie Solidaire / Plan International / Planète Enfants & Développement / Plateforme ELSA / POI / Première Urgence Internationale / RESACOOOP / RESILAC consortium / RITIMO / RSM / Savoie Mont-Blanc Humanitarian Master / Secours Islamique France / Sidaction / Social Hackers Academy / Solidarité Sida / SOLIDARITÉS INTERNATIONALE / Solthis / SOS Faim Mali / SurveyCTO / Swiss Water & Sanitation Consortium / Terre des hommes / The Engine Room / TolaData / UNHCR / UNICEF / Université Cergy Pontoise / VENRO / Yaam Solidarités




More info at:  
[www.cartong.org](http://www.cartong.org)

CartONG - 23 Boulevard du Musée, 73000 Chambéry, France

 +33 4 79 26 28 82

 [info@cartong.org](mailto:info@cartong.org)

 CartONG

 @assocCartONG

 CartONG

 CartONG

This publication was produced by CartONG. The report was designed by William Natta and Yelena Yvoz.  
June 2023.

Cover image: Subjective mapping workshop, "Raising awareness on the impact of water on the health of communities in Mayotte"  
project, taken in June 2022 in Mayotte (France)

© CartONG

All images and maps in the report: © CartONG (unless specified otherwise). The icons used in this report are available on  
[www.flaticon.com](http://www.flaticon.com)