

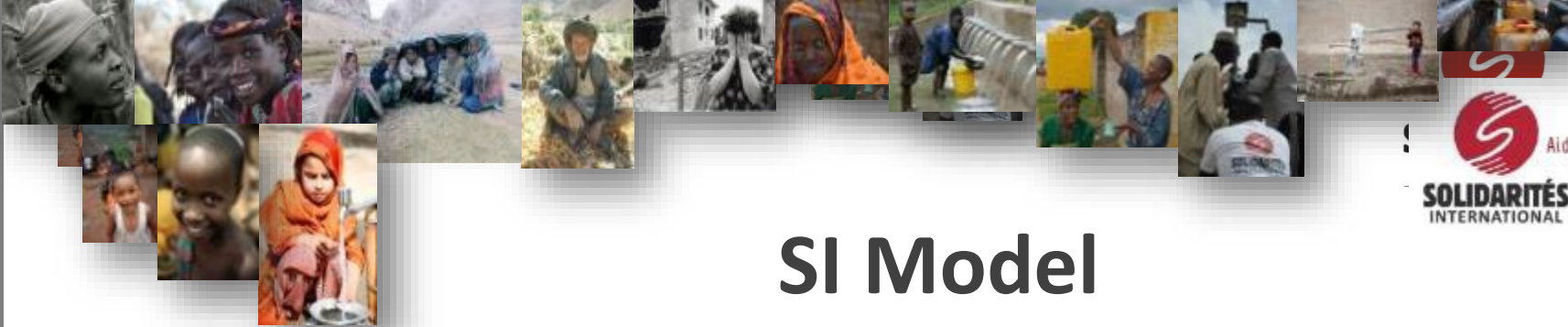


SOLIDARITÉS
INTERNATIONAL

**The future of data management in the humanitarian
sector**

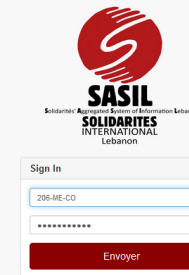
What can we outsource?

October 2016 – Chambéry



SI Model

- Most data management is done in-house
- Capacity development ongoing through “MEAL approach”
- Several experiences of in-house tool development (intranet, online database)



SOLIDARITÉS
INTERNATIONAL

North-Lebanon Tripoli - Lebanon
Hotline Number: +961 70 066 589
Webmail: Field missions / HQ

Solidarités International Aggregated System Of Information in Lebanon

Welcome to Solidarités International's Aggregated System of Information in Lebanon. This system provides authorized personnel with access to SI Lebanon's most up-to-date program databases.

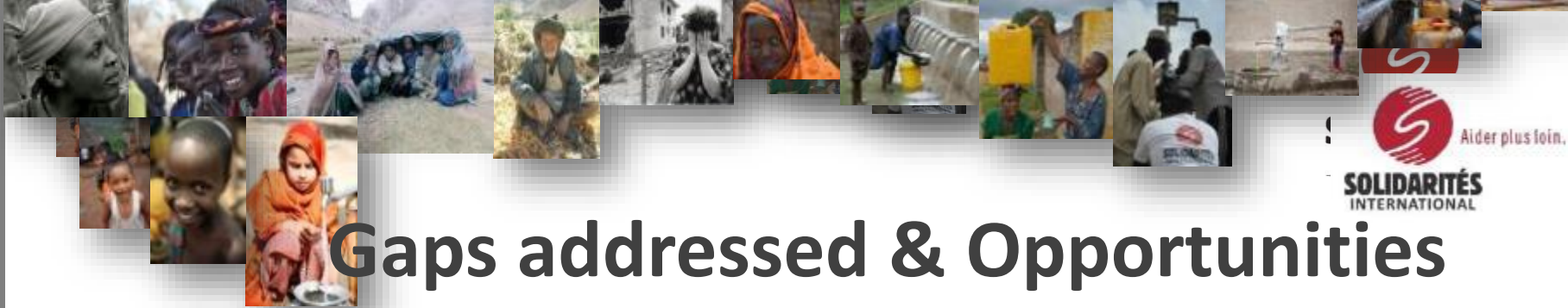
For any problem, suggestion or question, please contact us at im.aup.tripoli@solidarites-liban.org

❖ **Culture of *frontliners* (do it yourself)**



SI Outsourcing Experiences

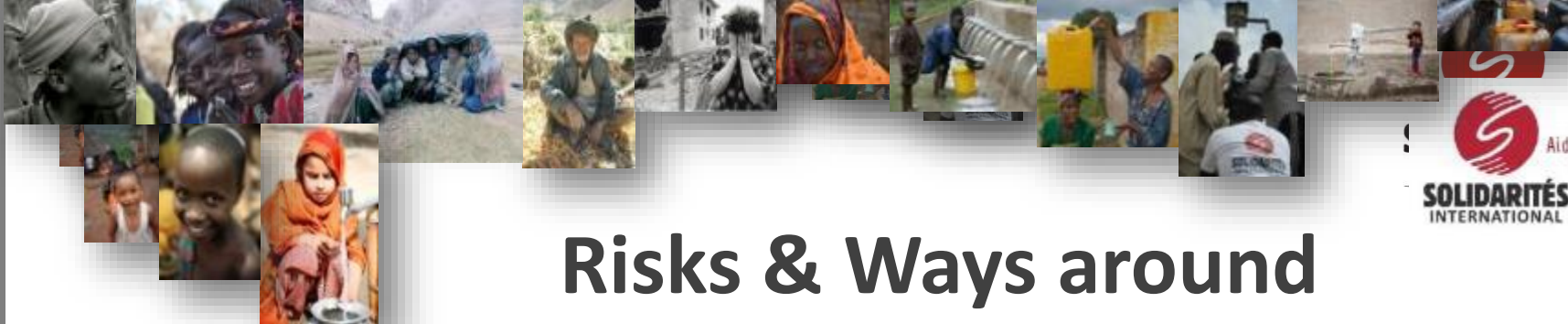
- **Tool design and deployment:**
 - Database construction in Mali and CAR (IM)
- **IM Capacity Building:**
 - Use of MDC and analysis tool in CAR (IM)
- **Monitoring survey implementation:**
 - Baseline and endline surveys in Afghanistan, Kenya, Mali (Research Consultants)



Gaps addressed & Opportunities

- Need for IM culture
- Need for IM skills and know-how
- Need for data analysis skills

+ Need for more time to invest in innovation (identification & piloting)



Risks & Ways around

- ✘ **Separation between data and meaning:**
 - ✓ Project led by 2 people “speaking the same language”

- ✘ **Increase in costs:**
 - ✓ Good value for money (anticipation instead of damage-control)

- ✘ **Lack of “data ownership”:**
 - ✓ Regular restitutions and presentations (support is at the service of the program)



SOLIDARITÉS INTERNATIONAL

Thank you